

VIONARO

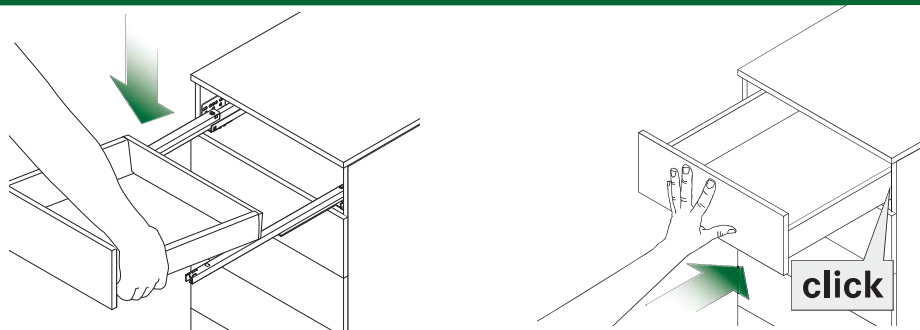
Technical information H89/H121

MOUNTING/DISMOUNTING

Inserting the drawer

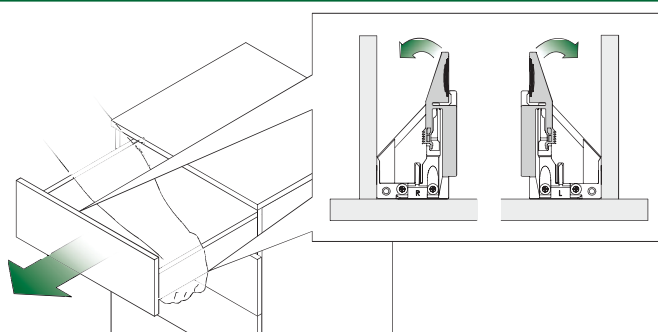
Place the drawer on the extended slides.
Push the drawer fully home.

Drawer engages automatically!



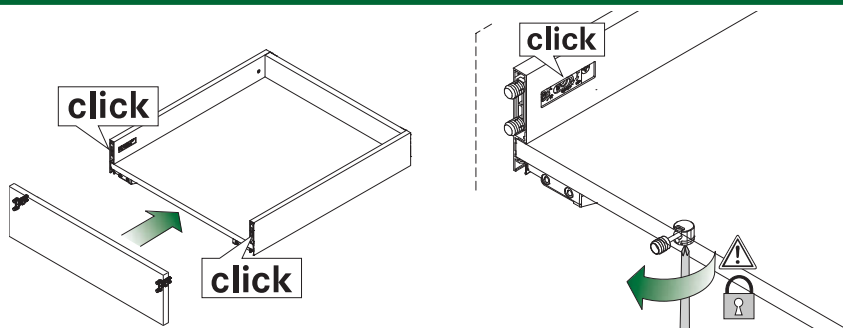
Removing the drawer

Pull out the drawer, actuate the lever of the front locking device on both sides and pull the drawer off the slide towards the front.



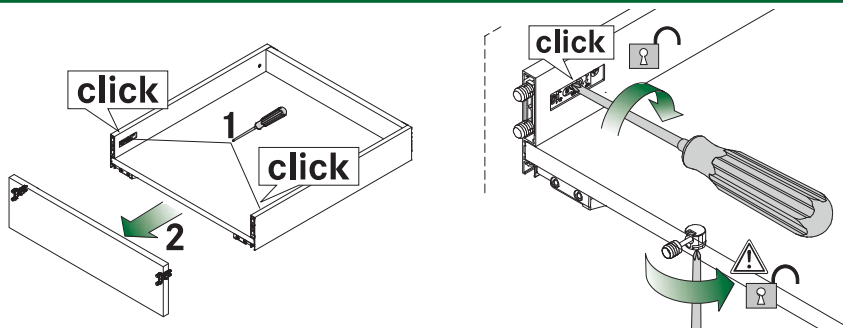
Front panel installation

Insert the front connection into the drawer sides. The front panel engages automatically and is fixed.



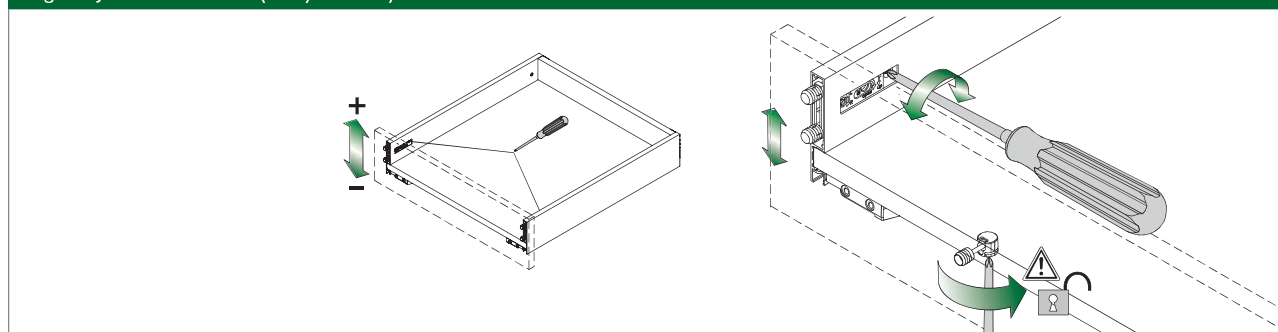
Removing the front panel

Use Pozidriv No. 2 screw driver to release.



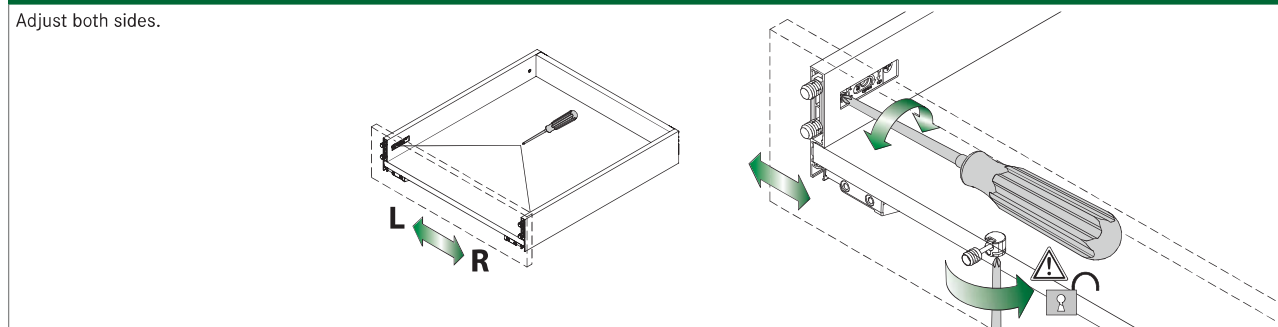
ADJUSTMENTS

Height adjustment with cam (+2.5/-1.5 mm)

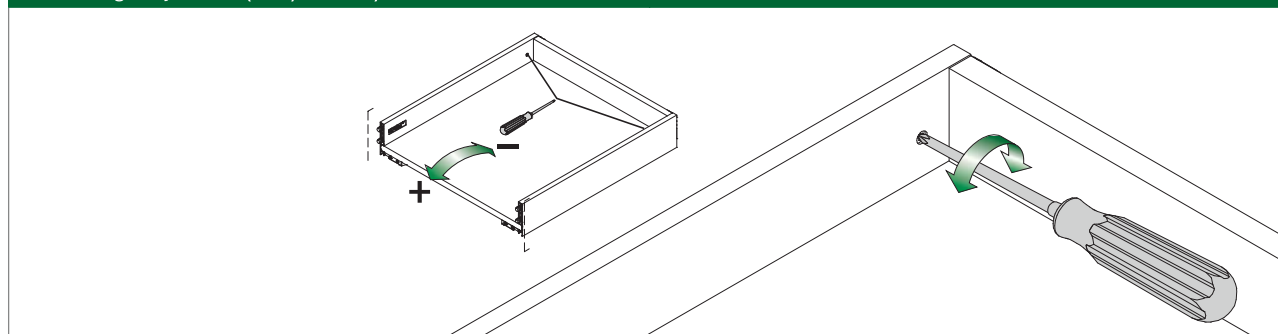


Side adjustment (± 1.5 mm)

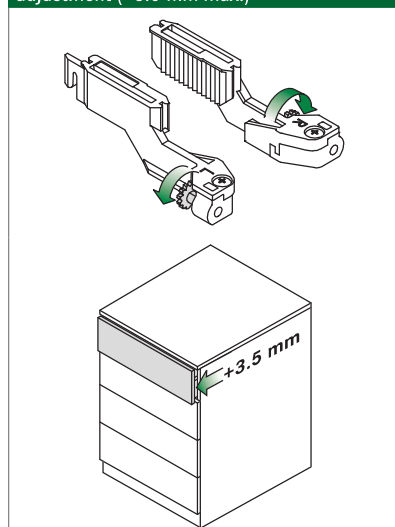
Adjust both sides.



Front tilt angle adjustment (+2.5/-1.5 mm)

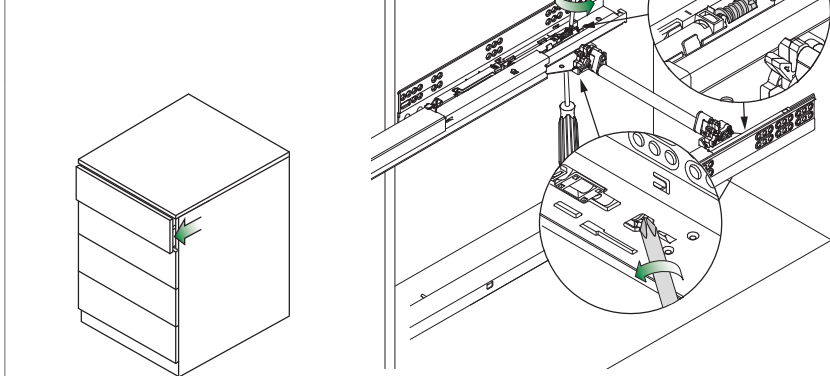


Dynapro Soft-close: Optional depth adjustment (+3.5 mm max.)



Dynapro Tipmatic: Front gap adjustment from above or below

The reliable opening and closing of the drawer depends on the front gap adjustment (factory setting 4.5 mm). If the front height is more than 300 mm the front gap must be increased to the maximum 6 mm.



VIONARO

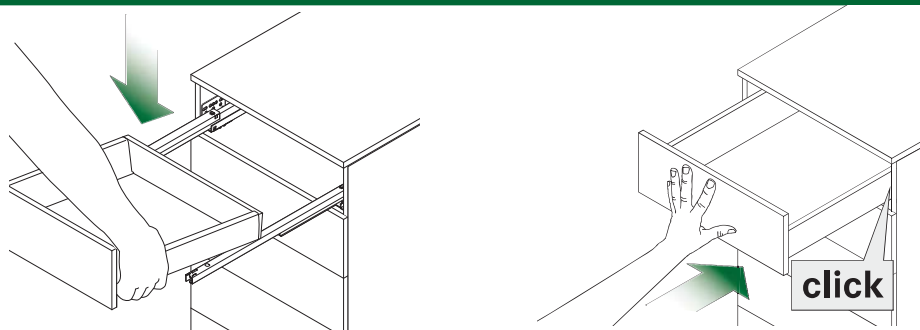
Technical information H185/H249

MOUNTING/DISMOUNTING

Inserting the drawer

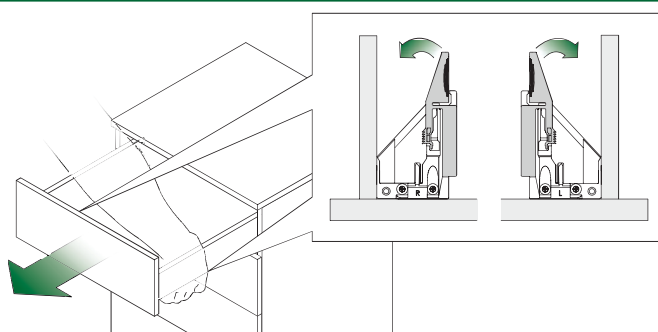
Place the drawer on the extended slides.
Push the drawer fully home.

Drawer engages automatically!



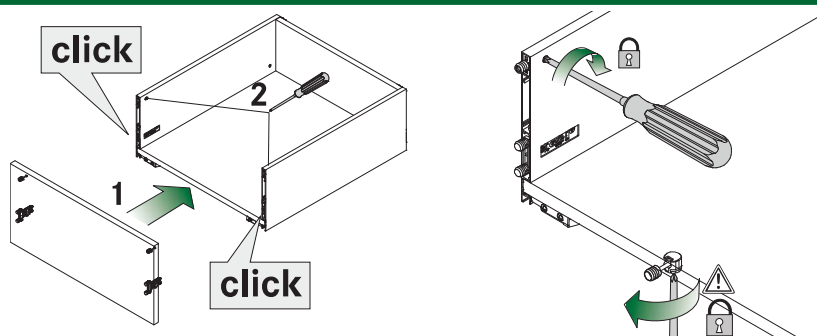
Removing the drawer

Pull out the drawer, actuate the lever of the front locking device on both sides and pull the drawer off the slide towards the front.



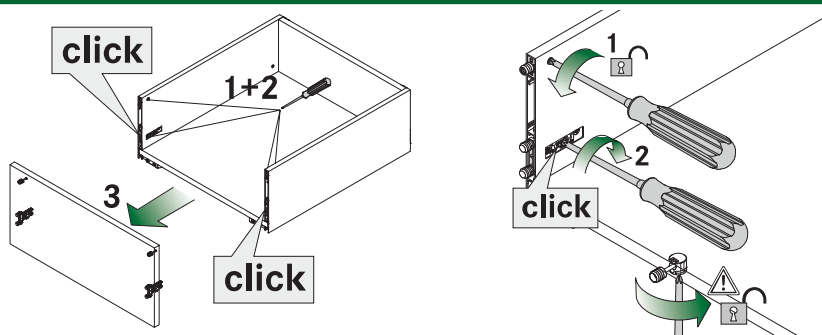
Front panel installation

Insert the front connection into the drawer sides. The front panel engages automatically, fit the front stabiliser.



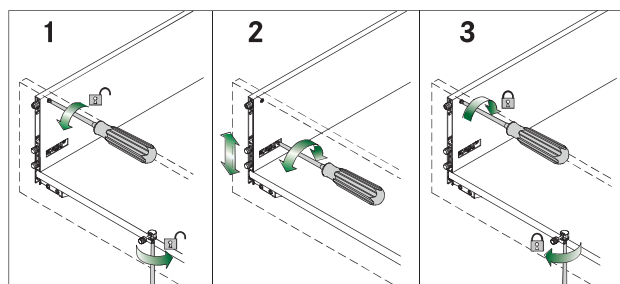
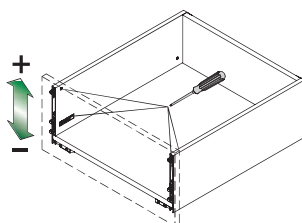
Removing the front panel

Use Pozidriv No. 2 screw driver to release.



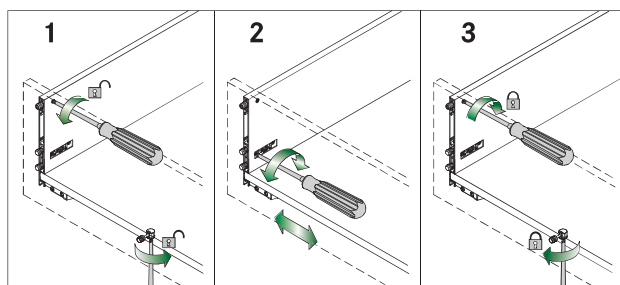
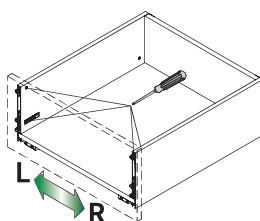
ADJUSTMENTS

Height adjustment with cam (+2.5/-1.5 mm)

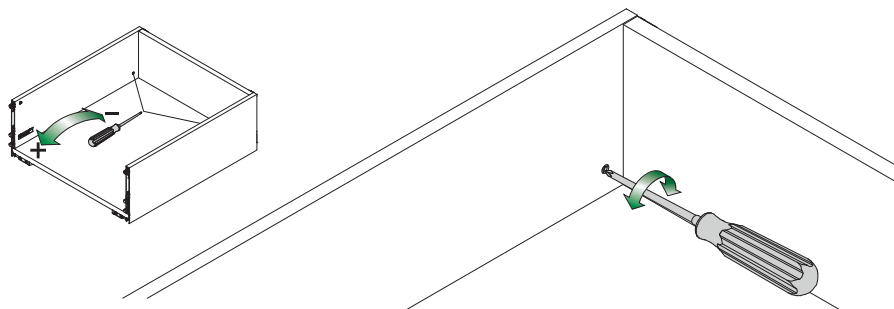


Side adjustment (± 1.5 mm)

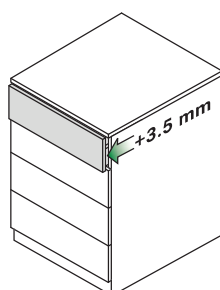
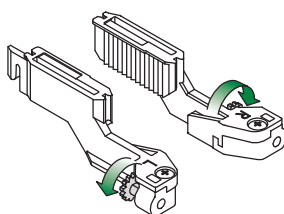
Adjust both sides.



Front tilt angle adjustment (+2.5/-1.5 mm)



Dynapro Soft-close: Optional depth adjustment (+3.5 mm max.)



Dynapro Tipmatic: Front gap adjustment from above or below

The reliable opening and closing of the drawer depends on the front gap adjustment (factory setting 4.5 mm). If the front height is more than 300 mm the front gap must be increased to the maximum 6 mm.

